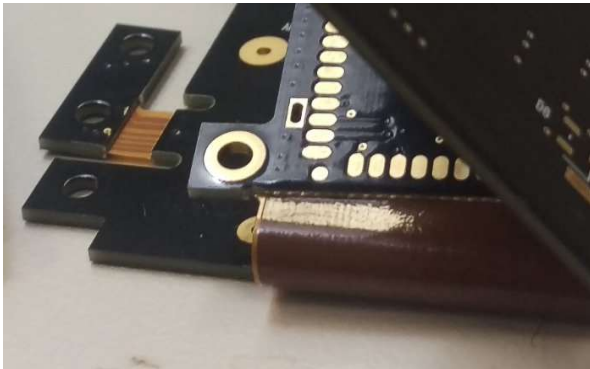


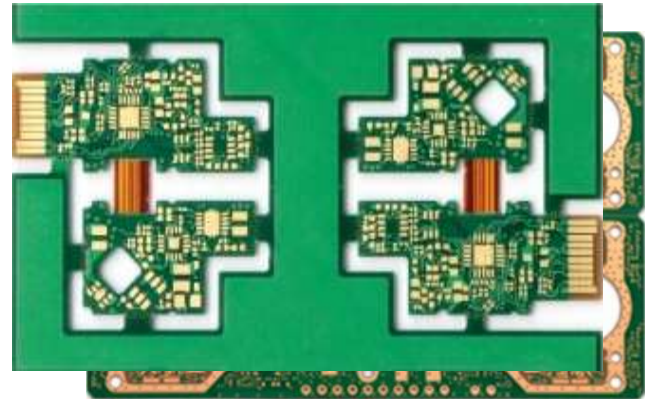
FEATURES	APPLICATIONS
<ul style="list-style-type: none"> <li>- Rigid Flex PCBs</li> <li>- Single, Double, and Multi-layer (up to 12 layers)</li> <li>- Wide selection of Glass Transition: Tg-140, Tg-150, Tg-170 or Tg-180</li> <li>- Wide range of finishes: OSP, HASL, ENIG, Gold Plating, Immersion Tin</li> <li>- Foldable, Stackable designs</li> </ul>	<ul style="list-style-type: none"> <li>- IPC-6012 Class 2 – Dedicated service electronic products</li> <li>- IPC-6012 Class 3 – High performance electronic products</li> <li>- IPC-6012 Class 3A - Space and Military Avionics</li> <li>- Biomedical</li> </ul>

CAPABILITIES		UNITS	MIN.	TYP.	MAX	REMARKS
Maximum Layers					12	
Board Thickness		mm			5	
Rigid Material			Normal-Tg		High-Tg	FR-4, FR5, Halogen Free FR, and High frequency
Flex Material – Base/Insulation	Polyamide Polyester	mils	0.5 / 0.5		2 / 2	
			0.5 / 1		1 / 2	
Flex Adhesive and Stiffeners		Epoxy, Acrylic Adhesives. PI, FR, PET, Steel, Aluminum Stiffener options.				
Surface Finish		OSP, HASL, ENIG, Gold Plating, Immersion Tin				
Rigid Solder Mask Color		Green, Red, Yellow, Blue, Black, White				
Rigid Board Copper Thickness		oz			2	
Flex Copper Foil		oz	1/3		2	
Route Dimensions		mils	5		10	
Trace Layer	Outer Layer L/S	mm	0.07/0.07			
	Inner Layer L/S		0.07/0.07			
Hole Size		mm	0.15			
IPC-A-600 Compliant Boards			Class 2	Class 3	Class 3A	IPC-6012
UL Certified Boards		UL796 Wiring, Printed-Wiring Boards. UL94 V-0				
Buried copper / Buried vias		Ability to produce designs that include buried copper and buried vias				
HDI / High Frequency Board		Ability to produce High Density (HDI) boards and boards designed for high frequency communications				
Panelized		Multiple boards on a panel with V-cut and other breakaway options				
Adhesive backing and post-production		Ability to apply pressure-sensitive adhesive tapes and other post-production configuration				
Production		Ability to take projects from quick turn prototypes to high volume requirements				
Packaging		Vacuum sealed with desiccant and moisture indicator strip where applicable				

**PRODUCT SHOWCASE**



8L Rigid-Flex Tri-Fold PCB  
Compact Design for Human Wearable



6L Rigid-Flexible PCB  
Mixed lamination with Gold Finger



Semi-flexible Rigid PCB  
LED Light Engine with 20° curve in the design